

RIVER and SKY's *Lone Star Activity Book*



MASK: River

Here's a mask you can play with. You can use it to tell your friends how they can *Take Care of Texas!*

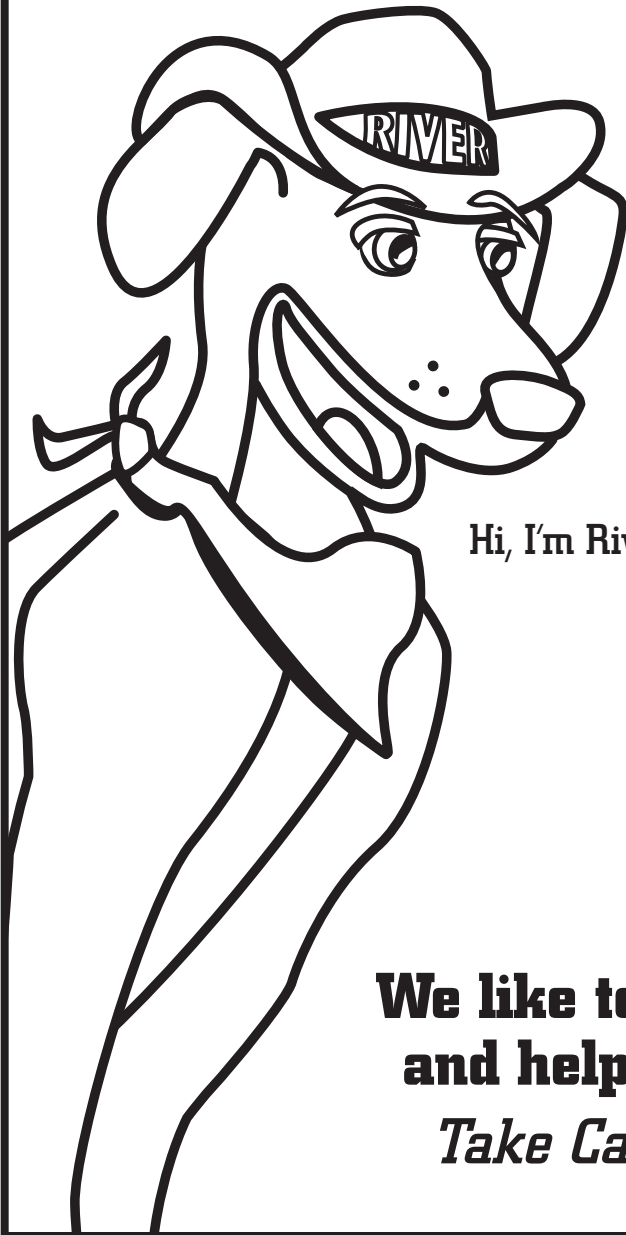
Directions:

1. Cut around the mask.
2. Cut out the white circles for the eyes.
3. Glue or tape mask to a popsicle stick.

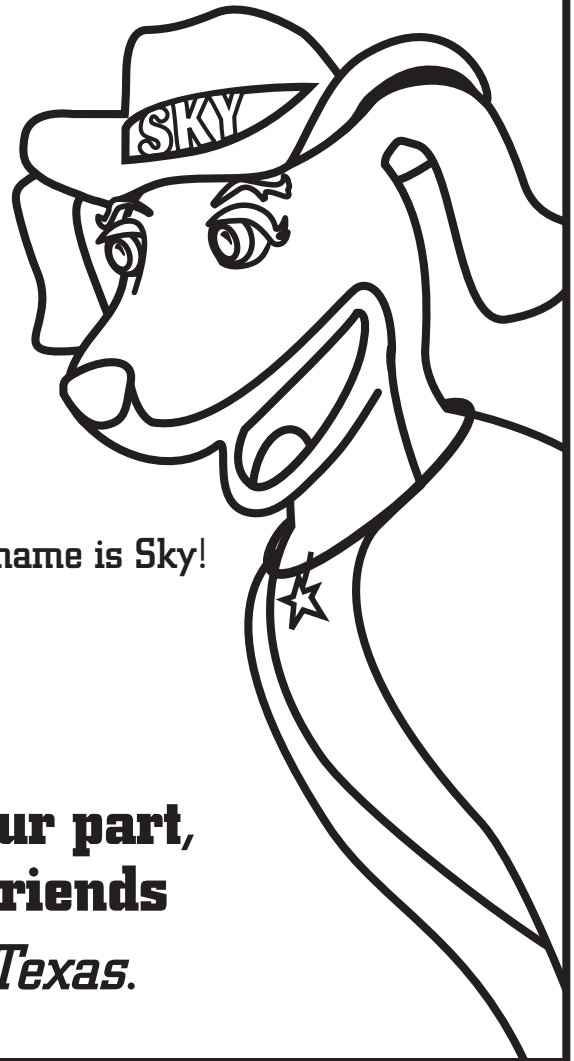


RIVER and SKY's

Lone Star Activity Book



Hi, I'm River!



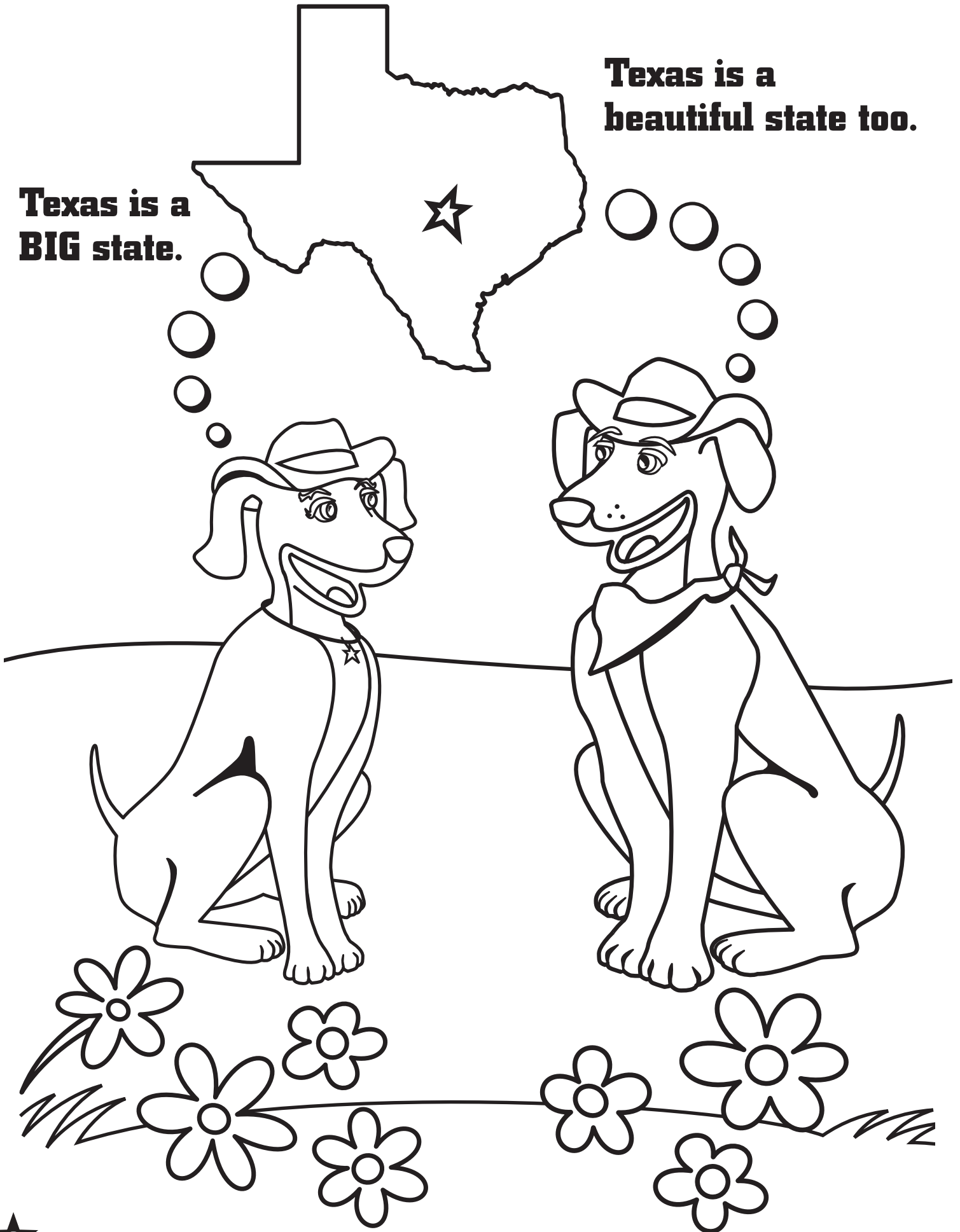
And my name is Sky!

**We like to do our part,
and help our friends
*Take Care of Texas.***

Tell us your name

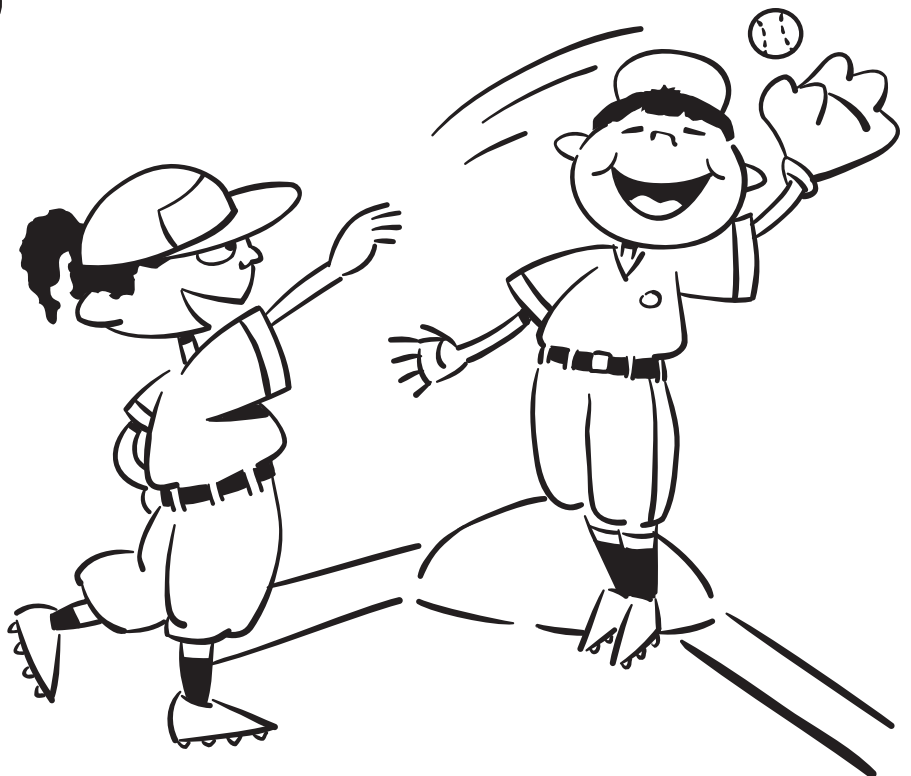
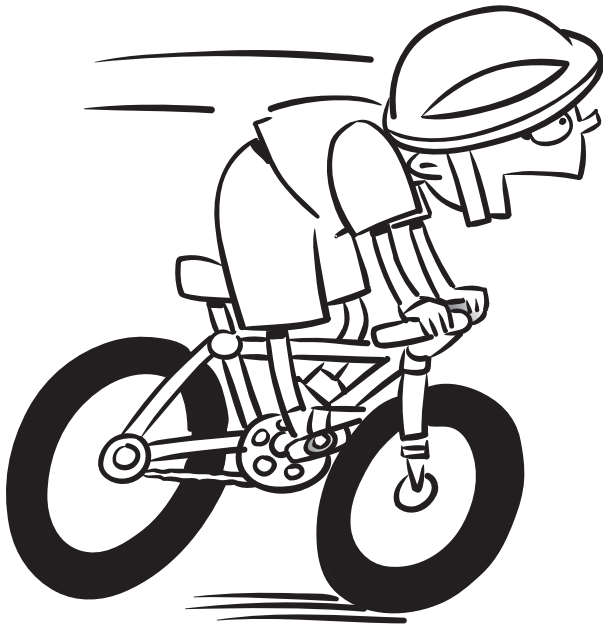
**Texas is a
BIG state.**

**Texas is a
beautiful state too.**



**We all like to enjoy Texas,
whether it's...**

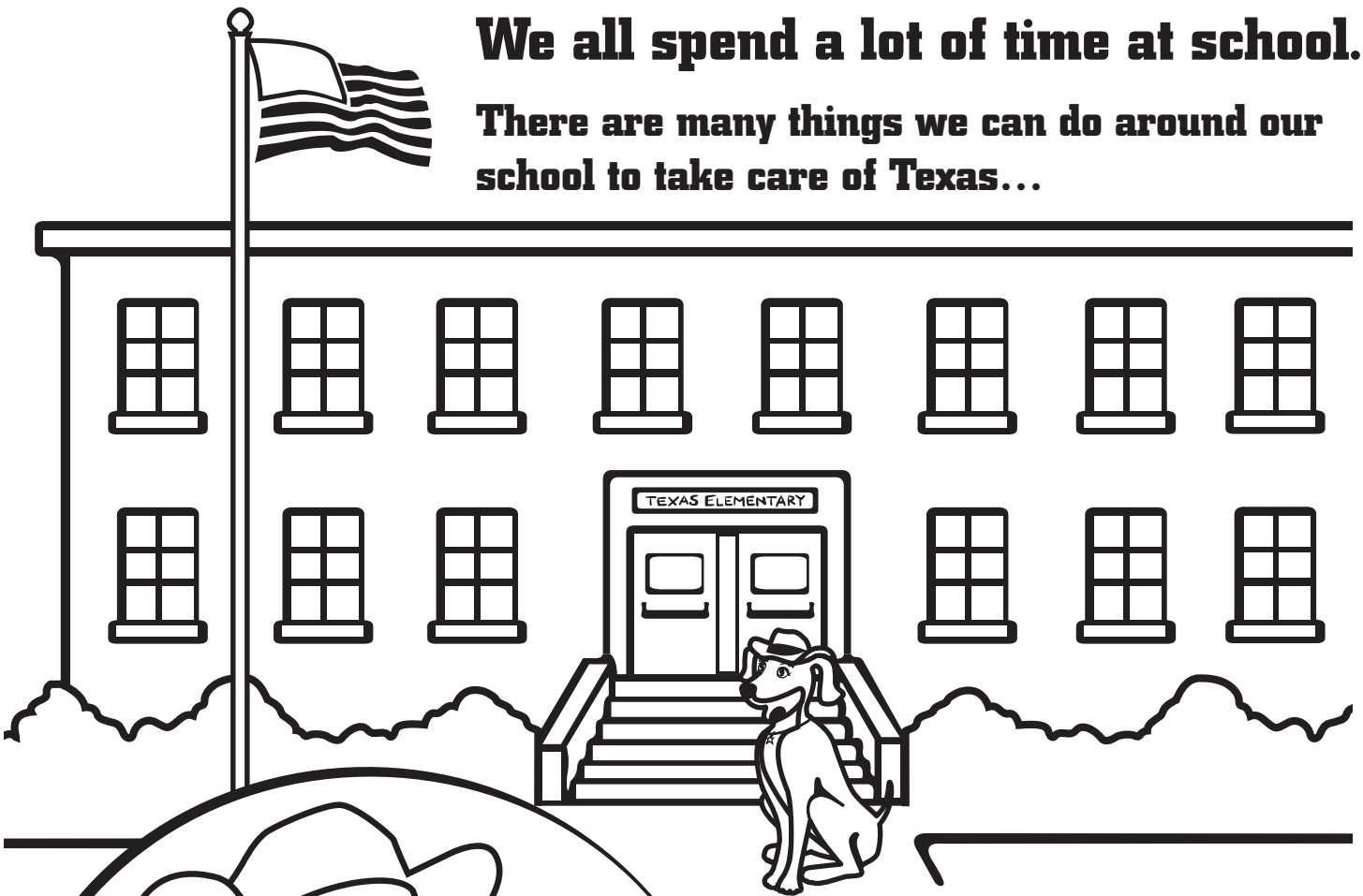
**...swimming,
...riding our bikes,
...or playing outside.**



**If we want to keep enjoying Texas, we need to
make smart choices every day to take care of Texas!**

We all spend a lot of time at school.

There are many things we can do around our school to take care of Texas...



When we read and write at school, we use a lot of paper.



So we don't throw away as much paper, we can...

...use both sides of our paper and recycle our paper instead of throwing it in the trash.

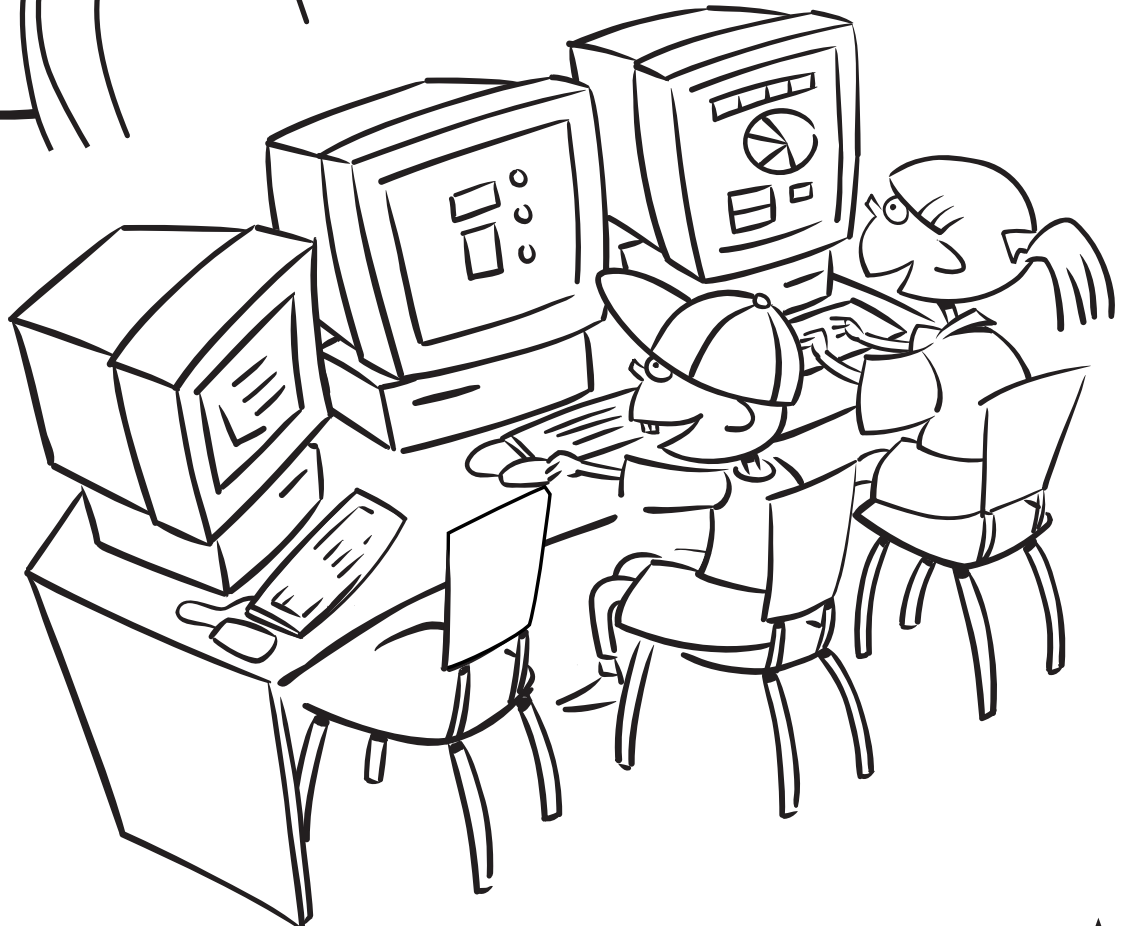


We also use electricity at school.

By turning off lights, TVs, and computers when we aren't using them, we can conserve electricity, which helps keep our air clean.

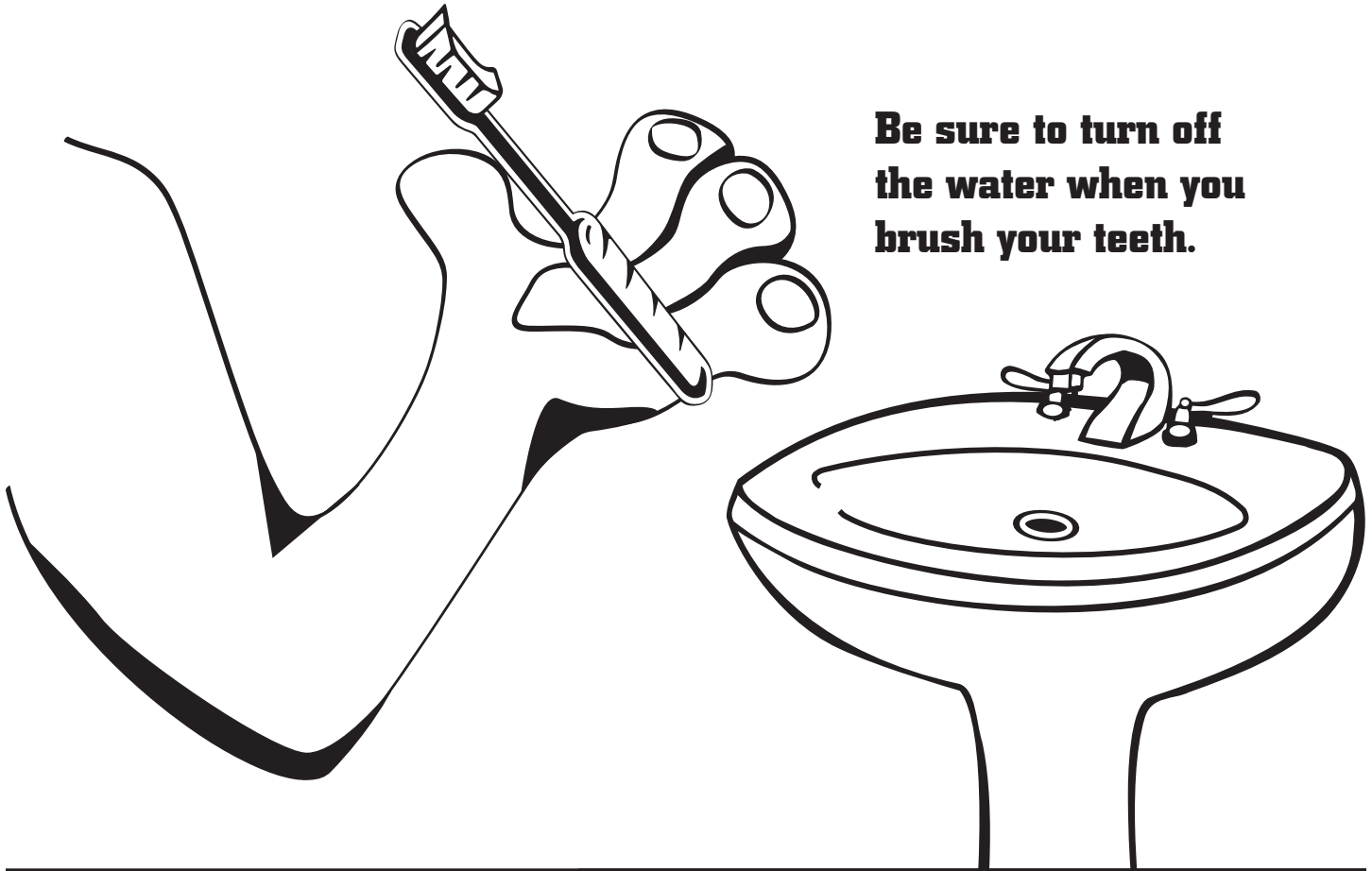


Activity: Color any computer that should be turned off BLUE and any that should be left on GREEN.



There are many things you can do at your home to help take care of Texas!

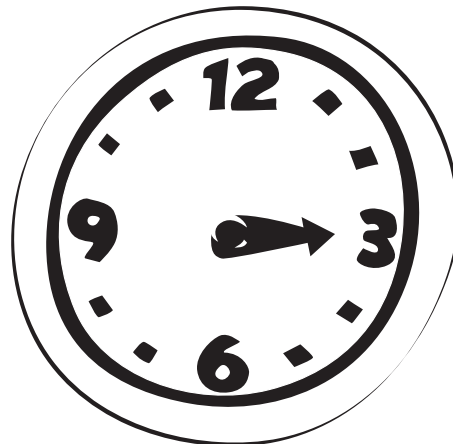
We can use less water and keep it in our lakes, rivers, and streams.



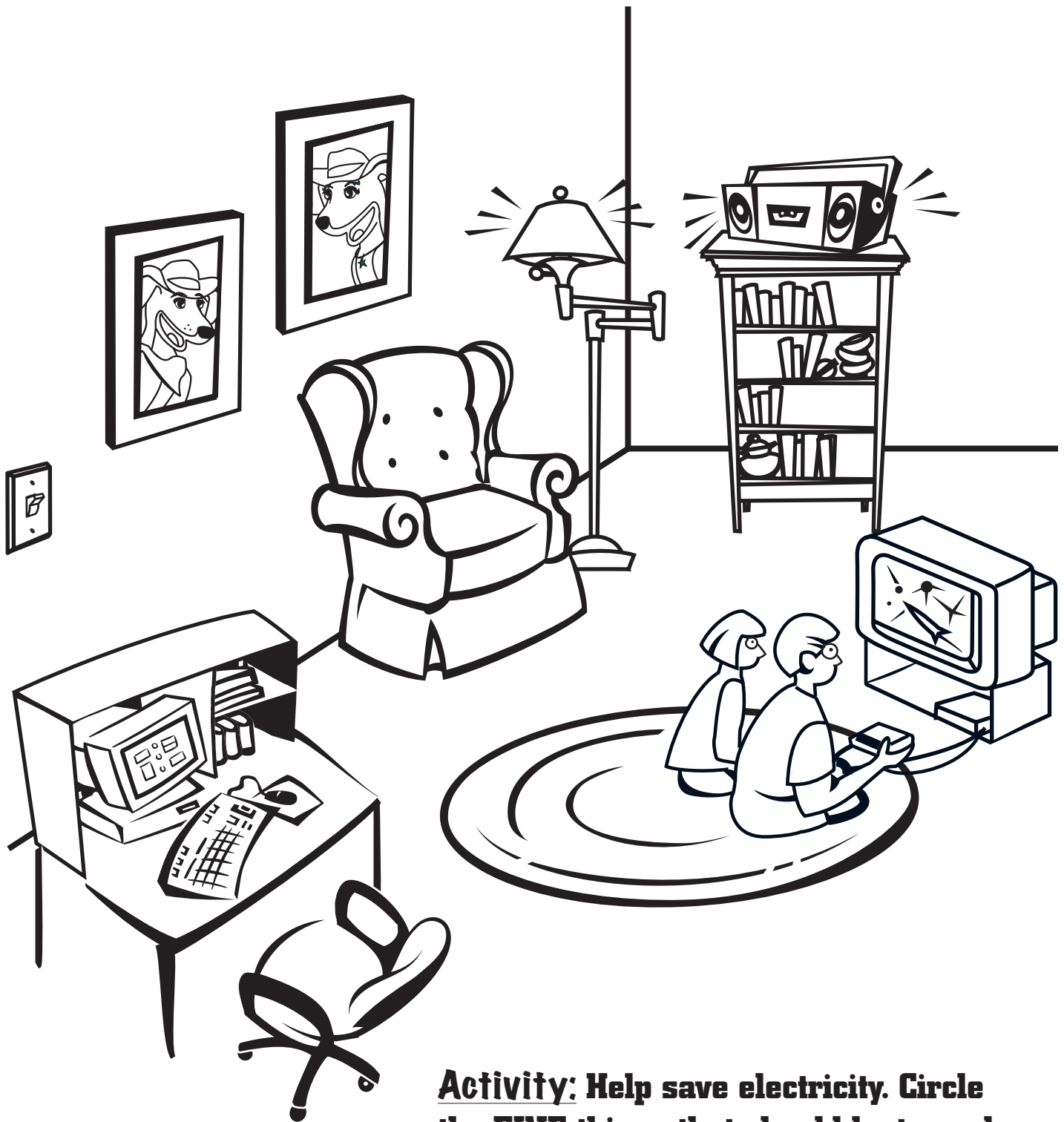
Try to take showers that only last FIVE minutes.



Activity: Draw the hand on the clock to show that five minutes have passed.



When you leave a room, turn off any lights, radios, TVs, computers, or video games that you aren't using.



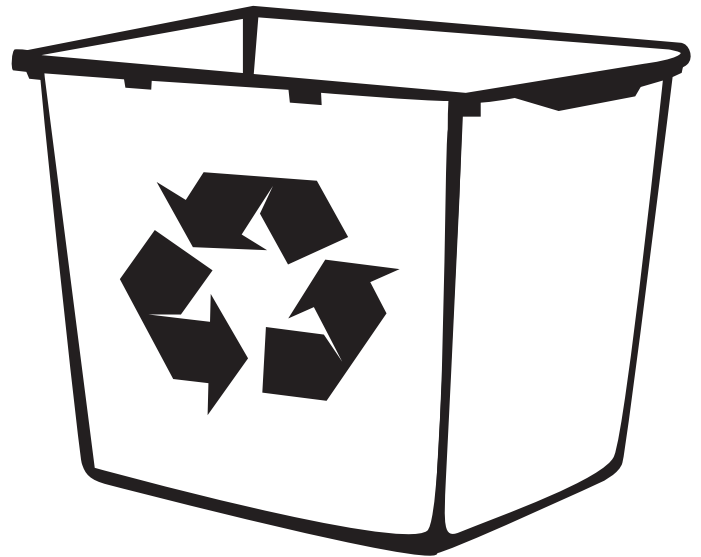
Activity: Help save electricity. Circle the FIVE things that should be turned off when no one is using them.

Not everything can be recycled. Leftovers and food wrappers should NOT go in the recycle bin.

Plastic bottles



Activity: Draw a line between the recycling bin and the items that **CAN** be recycled.

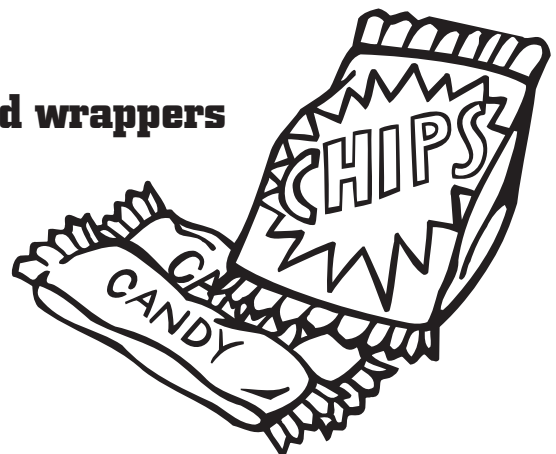


Aluminum cans

Paper



Food wrappers

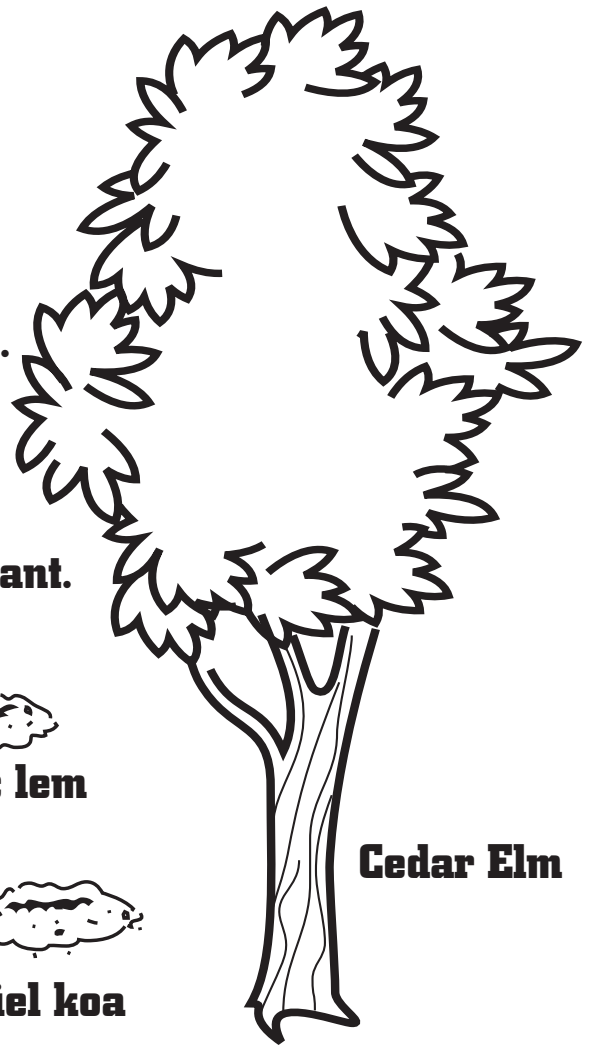


Trees, flowers, and other plants help make Texas beautiful.

Plants that we know grow easily in Texas, called "native plants," use less water.

Like all dogs, River and Sky like to dig holes.

Activity: Unscramble each word next to the holes they've dug, and then draw a line from the hole to its matching Texas native plant.



Cedar Elm

darec lem

viel koa



utomanni rellua



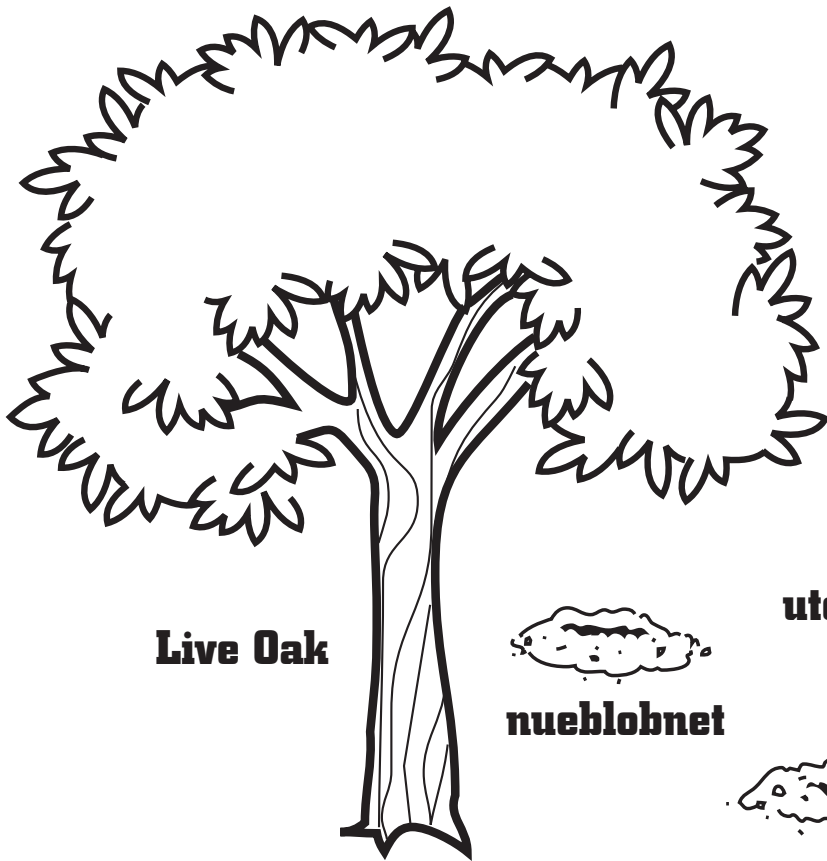
nueblobnet



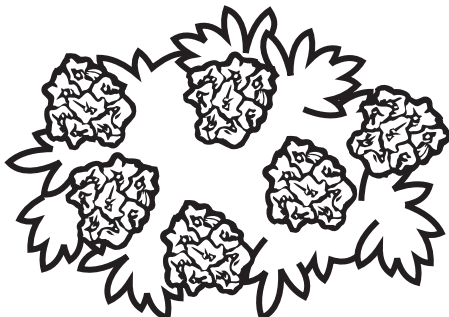
antalan



Mountain Laurel



Live Oak



Lantana



Bluebonnet

**We can take care of Texas when
we are out and about as well.**

By doing our part, we can all keep our communities clean and beautiful!

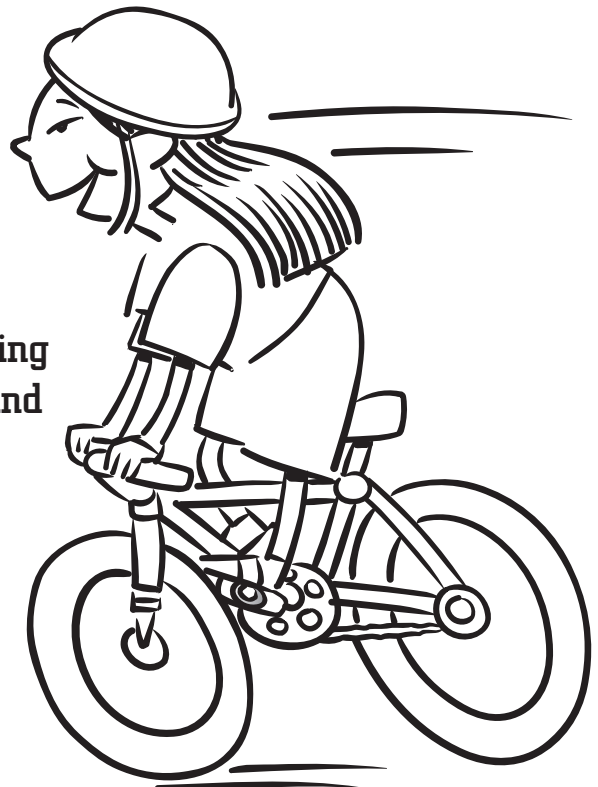


Don't litter.

Throw your recyclables
in a recycling bin and
your trash in a trash
can—never throw any
of them on the ground!

Ride your bike.

Instead of riding in the car, try riding
your bike for short trips. It's fun, and
it helps keep our air clean.



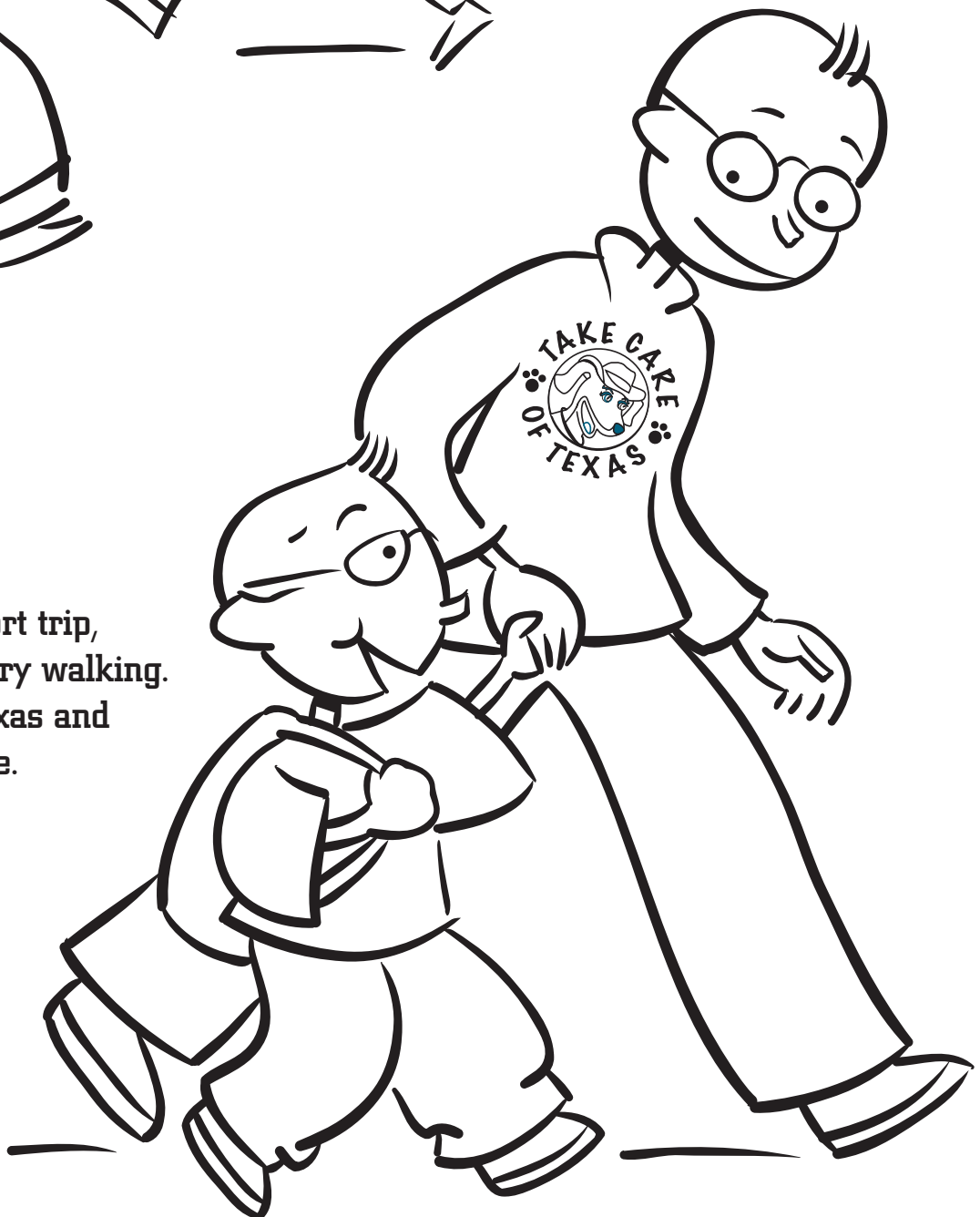


Tell your friends.

Ask your family and friends to help you take care of Texas. No matter where we live, we can all make smart choices to do our part!

Take a walk.

If it's a really short trip, your family can try walking. You can enjoy Texas and get some exercise.



How do you take care of Texas?

Activity: Use this page to draw a picture showing how you and your family
Take Care of Texas!





MASK: Sky

Here's another mask you can play with. You can use it to tell your friends how they can *Take Care of Texas!*

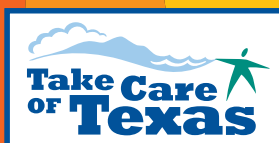
Directions:

1. Cut around the mask.
2. Cut out the white circles for the eyes.
3. Glue or tape mask to a popsicle stick.



Texas Commission on Environmental Quality

The TCEQ is an equal opportunity employer. The agency does not allow discrimination on the basis of race, color, religion, national origin, sex, disability, age, sexual orientation or veteran status. In compliance with the Americans with Disabilities Act, this document may be requested in alternate formats by contacting the TCEQ at 512-239-0028, Fax 512-239-4488 or 1-800-RELAY-TX (TDD), or by writing P.O. Box 13087, Austin, TX 78711-3087.



www.takecareoftexas.org
Online Tips to Do Your Part!